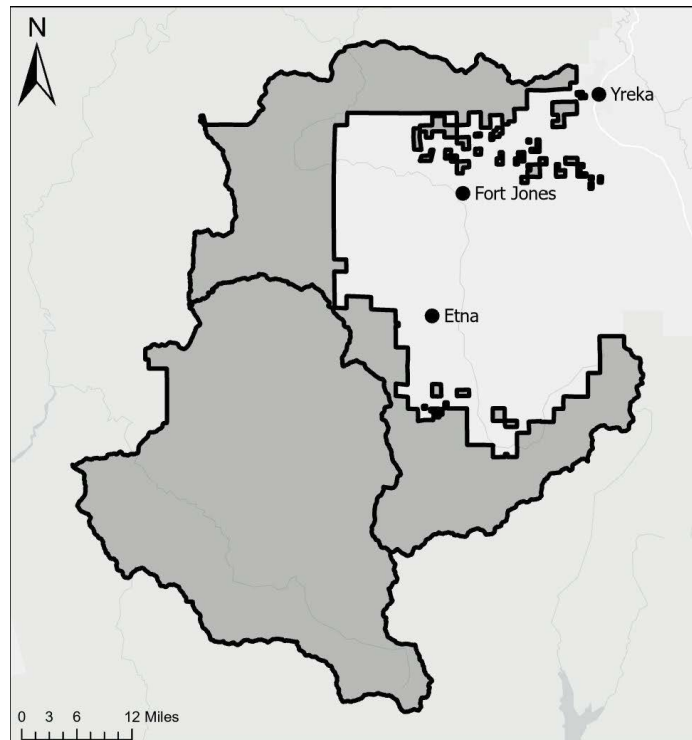


Request for Bids
Westside Klamath Burn Assist Contract for Winter 25/26
October 6th, 2025

Project Proponent: California Deer Association (CDA)

Location: Klamath National Forest, Salmon-Scott District

Location of burn units will be distributed across the Salmon-Scott Ranger District and proper instruction will be provided by CDA to the contractor for each project area.



Site specific directions will be given daily by the CDA project manager or FS representative. In some cases, the FS representative may be the prescribed fire burn boss. Site-specific project specifications will be provided, as needed, and will entail work described in the description of work above. Site specific maps will be provided as the need is determined by the CDA project manager.

Project Deliverables

- Provide a 5-person burn module for Prep and/or Implementation for up to 30 days of work over the winter season

Project Timeline

The terms of the contract shall begin on the date California Deer Association executes (signs) the contract and terminates in **July 2026**. Upon final selection, contractor is responsible for complying with CDA insurance requirements as specified in our contract.

Description of Work

Operation requirements are described as Items in the section below. The contractor will supply five-person burn modules daily, as requested by CDA. Multiple five-person modules may be requested for any given day. A minimum of three, five-person modules shall be available for each request. Modules may be **ordered by CDA** when USFS needs preparation or implementation assistance in one or more burn units. Requests for modules will occur at least 48 hours prior to the expected reporting time at the work location. Requests may be less than 48 hours prior to expected reporting time, however, in this event, the contractor can decline without repercussions.

Modules shall be prepared to hike up to one mile from the vehicle to the work location. Work assignments are based on an 8-hour workday exclude travel, lunch, and breaks. The workday will start at the Salmon-Scott District Office in Fort Jones, CA or at an agreed upon briefing location. Project locations that require extensive driving time may require a 10-hour workday where 4, 10-hour workdays would equate to 5, 8-hour workdays.

Site-specific directions will be provided daily. Modules can be ordered for any one of the following operations, a combination of all the outlined task operations.

Task 1. Rx Burn Preparation and/or Implementation

Prep: Operations to prepare burn units may include the following: building, trimming, and recovering hand piles, handline construction, chipping, thinning, lop-and-scattering of slash debris, brushing handlines, pullback of fuels from handlines and leave trees, cutting trees less than 8 inches DBH and limbing trees greater than 8 inch DBH, pulling and removal of plastic from units that will not be burned.

Implementation: Operations to implement prescribed fire may include the following: igniting hand piles and machine piles, igniting broadcast burn units, monitoring for spot fires and slop-overs, constructing fire line around spot fires and slop-overs or to halt fire spread within a unit, extinguishing spot fires and slop-overs with water, mop-up, and patrol. Definitions of the aforementioned activities will adhere to National Wildfire Coordinating Group (NWCG) definitions (<https://www.nwccg.gov/publications/pms205/nwccg-glossary-of-wildland-fire-pms-205>).

Personnel, Transportation, and Equipment

The following are the descriptions of requirements for personnel, transportation, and equipment for each five-person module:

1. Five (5) persons; at least one person will be able to handle administrative responsibilities for the module on behalf of the contractor; this person shall be proficient in written and spoken English.
2. Transportation: 1 vehicle capable of operating on narrow, unpaved roads
3. Equipment (per five-person module):
 - 2 chainsaws (saw gas and supplies)
 - 2 Pulaski
 - 2 shovels
 - 2 scrapers
 - 1 backpack pump

Personal Protective Equipment

The following personal protective equipment (PPE) is required for each individual participating in prescribed fire implementation:

1. Boots: Leather, lace-up type, minimum of 8" high with lug type sole in good condition (steel toed-boots are not acceptable).
2. Wildland Firefighter's Helmet - (NFPA) 1977 compliant helmet. Or equivalent hardhat meeting ANZI Z89.1-2003 Type 1, Class G or ANSI Z89.1-2009 Type 1, Class G. All helmets must be equipped with a chin strap.
3. Gloves: One pair of heavy-duty leather work gloves.
4. Eye Protection: One pair (must meet standards ANSI Z87.1, latest edition).
5. Hearing Protection: Use hearing protection whenever sound levels exceed 85 dB, i.e. during chainsaw operation.
6. Head Lamp: With batteries and attachment for mounting to hard hat.
7. Canteen: At least one (1) quart size canteen full of water, two (2) is recommended.
8. Fire Shelter (M-2002): One per person (must be manufactured in accordance to FS specification 5100-606 and certified by Underwriters Laboratory (UL)). Fire Shelter information at www.NIFC.gov/fireShelt/fshelt_main.html or contact US Forest Service Missoula Technology and Development Center at 406-329-3900.
9. Flame Resistant Clothing: A minimum of two full sets of flame resistant shirt and pants. For routine fireline duties, flame resistant clothing must:
 - Self-extinguish upon removal from a heat source.
 - Act as an effective thermal barrier by minimizing conductive heat transfer.
 - Not melt or shrink to any appreciable degree upon decomposition during exposure to a high heat source.
 - Be manufactured from flame resistant material such as; aramid (Nomex™), para-aramid (Kevlar©) or other similar fabric.

**Note: It is recommended that firefighters wear a short-sleeved t-shirt, underwear, and socks under flame resistant clothing. T-shirts, underwear, and socks should be made of 100% cotton, wool, or a 100% flame resistant blend of fibers.*
10. Chain Saw Chaps: For each firefighter who operates a chain saw, chain saw chaps must be worn during saw operations. Chain saw protection/chaps shall meet USFS Specification 6170-4F or later or meet the current requirements of NFPA 1977. Chain saw chaps should be adjusted for a snug fit that will keep them positioned correctly on the legs. Chain saw chaps must be long enough to reach 2 inches below the boot tops. Proper fit and correct chap length maximize protection.

Qualifications (for Rx Fire Implementation)

All personnel on each 5-person module will meet the following minimum NWCG qualification:

- FIREFIGHTER (FFT2)

All personnel operating chainsaws for prescribed fire implementation will meet the following minimum NWCG qualification:

- INCIDENT SAWYER

**Note: The INCIDENT SAWYER qualification is not required for chainsaw work in Rx fire preparation activities.*

Qualification Card

Each firefighter must carry a photo identification card issued annually by the Contractor for whom the firefighter is working. Information on the card must include:

- Name of the firefighter typewritten or printed
- Photograph of the person, recent digitized photograph, similar to the size and clarity of a state issued driver’s license
- A unique employee number (not their social security number),
- Firefighter’s full legal name
- List of position(s) for which the firefighter is qualified and date of qualification(s),
- # of seasons of experience
- English language proficiency
- Date the firefighter passed the Work Capacity Fitness Test
- Date the firefighter completed Annual Fireline Safety Refresher training

The Contractor must sign the firefighter’s identification card certifying that the individual has met all the training requirements of this contract.

Physical Demands

Work under this contract requires strenuous physical exertion for extended periods including walking, climbing, chopping, throwing, lifting, pulling and frequently carrying objects weighing fifty (50) pounds or more. All personnel engaged in prescribed fire implementation shall have passed the Work Capacity Fitness Test (WCFT) at the arduous level. The fitness requirement is the ability to negotiate a three (3) mile hike with a 45-pound pack in less than 45 minutes. Copies of the publication titled “Fitness and Work Capacity,” second edition NFES 1596 April 1997, and associated videos can be purchased from the Great Basin Fire Cache at the National Interagency Fire Center in Boise, Idaho. The Government reserves the right to monitor the administration of any classroom instruction, and WCFT administered for compliance with “Work Capacity Fitness Test Instructor’s Guide.” The Contractor(s) must provide proof that their employee(s) has/have met this requirement upon request.

Smoke Exposure

Prescribed fire implementation involves exposure to smoke. Information on smoke impacts can be found in the NWCG Smoke Management Guide for Prescribed Fire (<https://www.nwcg.gov/publications/pms420-3>).

Government-Furnished Equipment:

In addition to the contractor-provided equipment specified under “specific work requirements”, government-furnished equipment will be utilized. The contractor is expected to care for and operate the government-furnished equipment appropriately and according to the direction of the CDA project manager or USFS burn boss.

Description	Location	Remarks
Approved firing devices with fuel	At work site	USFS will provide ignition devices & fuel.
Pile covering material	At work site	USFS will provide pile covering material.
Hand-held radio	At work site	Provided if determined necessary by USFS burn boss (<i>contractor will be</i>

		<i>expected to have a minimum of two per module)</i>
Chipper	At work site	Not to be operated by Contractor
Site-specific project specifications	At work site or when modules are ordered	As needed <i>(provided by CDA project manager or USFS burn boss)</i>

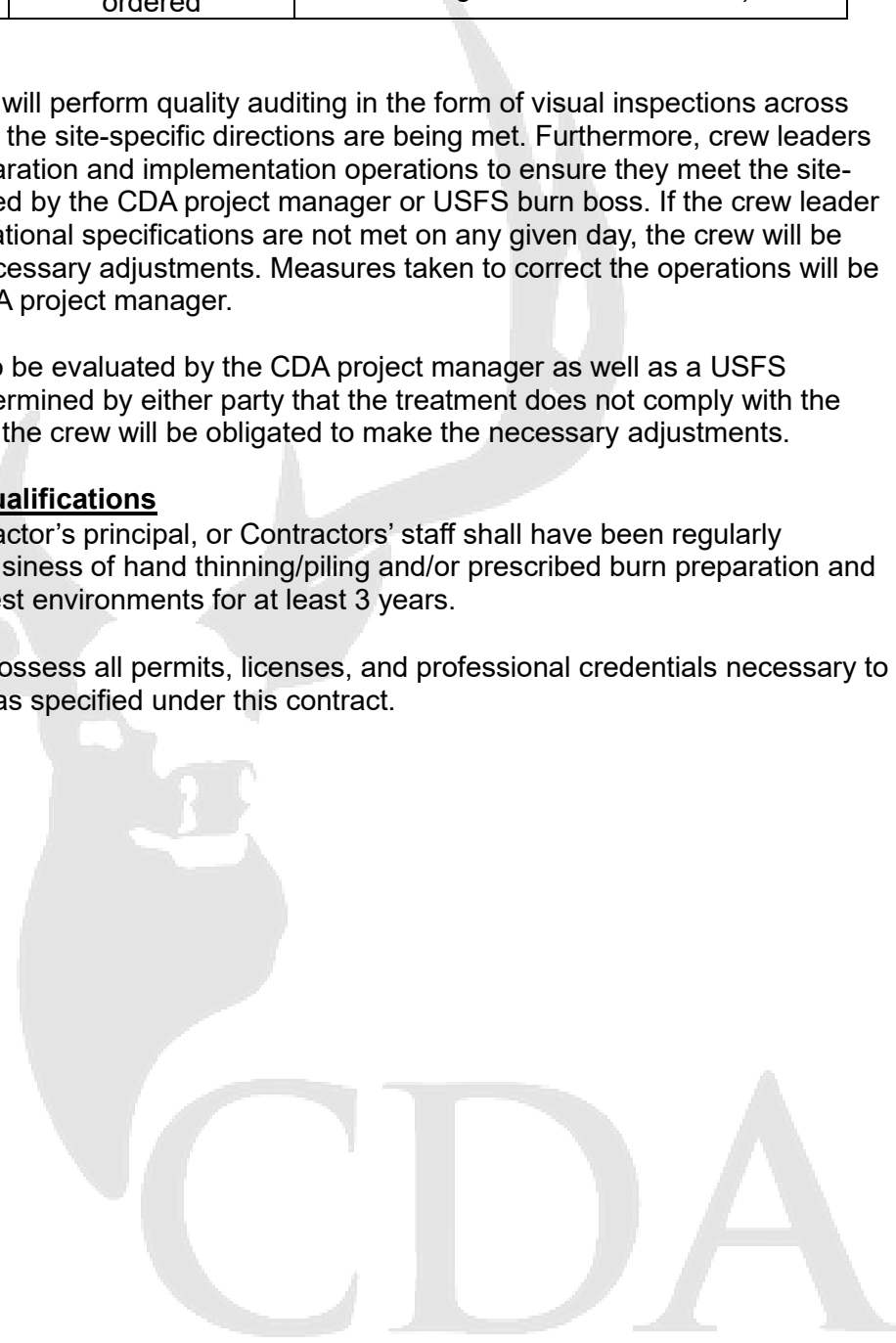
Quality Assurance

The contract crew leader will perform quality auditing in the form of visual inspections across each unit to evaluate that the site-specific directions are being met. Furthermore, crew leaders will inspect Rx burn preparation and implementation operations to ensure they meet the site-specific directions provided by the CDA project manager or USFS burn boss. If the crew leader determines that the operational specifications are not met on any given day, the crew will be obligated to make the necessary adjustments. Measures taken to correct the operations will be communicated to the CDA project manager.

Each treated unit will also be evaluated by the CDA project manager as well as a USFS representative. If it is determined by either party that the treatment does not comply with the requested specifications, the crew will be obligated to make the necessary adjustments.

Contractor Minimum Qualifications

- Contractor, Contractor’s principal, or Contractors’ staff shall have been regularly engaged in the business of hand thinning/piling and/or prescribed burn preparation and ignition within forest environments for at least 3 years.
- Contractor shall possess all permits, licenses, and professional credentials necessary to perform services as specified under this contract.



Appendix A – Specifications

BOUNDARY DESIGNATION

- **Burn Unit Boundaries:** Site-specific maps (either electronic or paper) will be provided as needed.
 - The Contractor Foreman on site shall be required to utilize georeferencing software such as Avenza Maps or Esri Field Maps and to have a Smart Phone, tablet, dedicated GPS unit, or other device capable of showing their location on the provided georeferenced electronic map as needed.
- **Private Property:** Private properties may be present throughout the project area. CONTRACTOR module leader will communicate with the CDA project manager if any of the mapped private property boundaries are not adequately flagged prior to commencement of treatment in any unit.
 - Absolutely no treatment activities will occur within private properties.
 - Parking is not permitted inside private property.

PROJECT DESIGN FEATURES

Unless otherwise agreed to in writing, Project operations will follow the project design features specifically assigned to each burn unit. The CDA Project manager or USFS representative will review any applicable project design feature prior to operations.

PROJECT DESIGN FEATURES		
DESIGN FEATURE	DESCRIPTION	APPLICABLE BURN UNITS

**Note: These will be provided on a site-specific basis.*

PROTECTION OF RESIDUAL TREES

CONTRACTOR Operations shall not unnecessarily damage young growth or other trees to be reserved, all residual trees shall conform to treatment specifications listed above.

OPERATION RESTRICTIONS

Multiple areas within the project boundaries have a limited operating period of February 1st through September 15th (operations can occur September 16th through January 31st). LOPs will be handled in guidance by the USFS personnel.

TRAFFIC CONTROL AND PUBLIC SAFETY

Much of the treatment for this project will occur along publicly accessible USDA Forest Service system roads. In order to ensure public safety throughout the project, CONTRACTOR will be required to comply with the following provisions when working within 200-ft of a roadside:

- CONTRACTOR will be required to display signage to indicate to oncoming traffic from both directions that work is ongoing.
- CONTRACTOR will provide all the necessary signage.
- If any of the treatment activities demonstrate a risk of debris falling into the roadway, CONTRACTOR will be required to perform traffic control to promote public safety.

CONTROL OF OPERATIONS

Under this contract, “CONTRACTOR’s Operations” shall include activities of or use of equipment of CONTRACTOR, CONTRACTOR’s employees, agents, contractors, subcontractors, or their employees or agents, acting in the course of their employment in

operations hereunder on National Forest lands or within Forest Service protection boundary (unless acting under the immediate supervision of Forest Service). CONTRACTOR's operations shall be conducted in a workman-like and orderly manner. CDA shall not cause unnecessary delay to the CONTRACTOR.

California Deer Association Project Manager reserves the right to shut down or restrict operations due to weather, unforeseen circumstances, or for violation of contract terms herein. Any shutdown or pause of operations will be disclosed to the contractor in writing and documented in the project file. Resumption of operations may commence only after written approval from the Project Manager.

WORK INSPECTION REPORTS

CDA Project Manager shall conduct frequent on-site inspections and will be required to document discussions with the contractor, work progress, and any corrective action(s) that may be needed. The inspection reports will be signed by CDA and the Contractor (when possible) and placed in the Project shared file.

DAMAGES

All losses or damages to material or equipment to be furnished pursuant to the Contract documents occurring prior to receipt and final acceptance of the Work shall be sustained by the CONTRACTOR. The CONTRACTOR shall sustain all losses arising from unforeseen obstructions or difficulties, either natural or artificial, encountered in the prosecution of the Work, or from any action of the elements prior to final acceptance of the Work, or from an act or omission on the part of the CONTRACTOR not authorized by the Contract Documents.

SANITATION AND SERVICING

CONTRACTOR shall take all reasonable precautions to prevent pollution of air, soil, and water by CONTRACTOR's operations. If facilities for employees are established in the Project Area, they shall be operated in a sanitary manner. CONTRACTOR shall also be responsible for the removal of all trash from the project site. CONTRACTOR shall not service tractors, trucks, or other equipment on National Forest lands where servicing is likely to result in pollution to soil or water. CONTRACTOR shall remove from National Forest lands all refuse and resulting from use, servicing, repair, or abandonment of equipment. Contractor shall keep project area clean and is responsible for removing all trash, waste, and rubbish from the jobsite on a daily basis. Trash, waste and debris shall be disposed of offsite in compliance with all applicable laws and at no time is litter permitted to be in the project area. In the event that CONTRACTOR's operations or servicing of equipment result in pollution to soil or water, CONTRACTOR shall conduct cleanup to restore the polluted site to the satisfaction of the Forest Service.

PREVENTION OF OIL & OIL PRODUCT SPILLS

If CONTRACTOR maintains storage facilities for oil or oil products on Project Area, CONTRACTOR shall take appropriate preventive measures to ensure that any spill of such oil or oil products does not enter any stream or other waters of the United States or any of the individual States.

If the total oil or oil products storage exceeds 1,320 gallons or if any single container exceeds a capacity of 660 gallons, CONTRACTOR shall prepare a Spill Prevention Control and Countermeasures (SPCC) Plan. Such a plan shall meet applicable EPA requirements (40 CFR 112), including certification by a registered professional engineer.

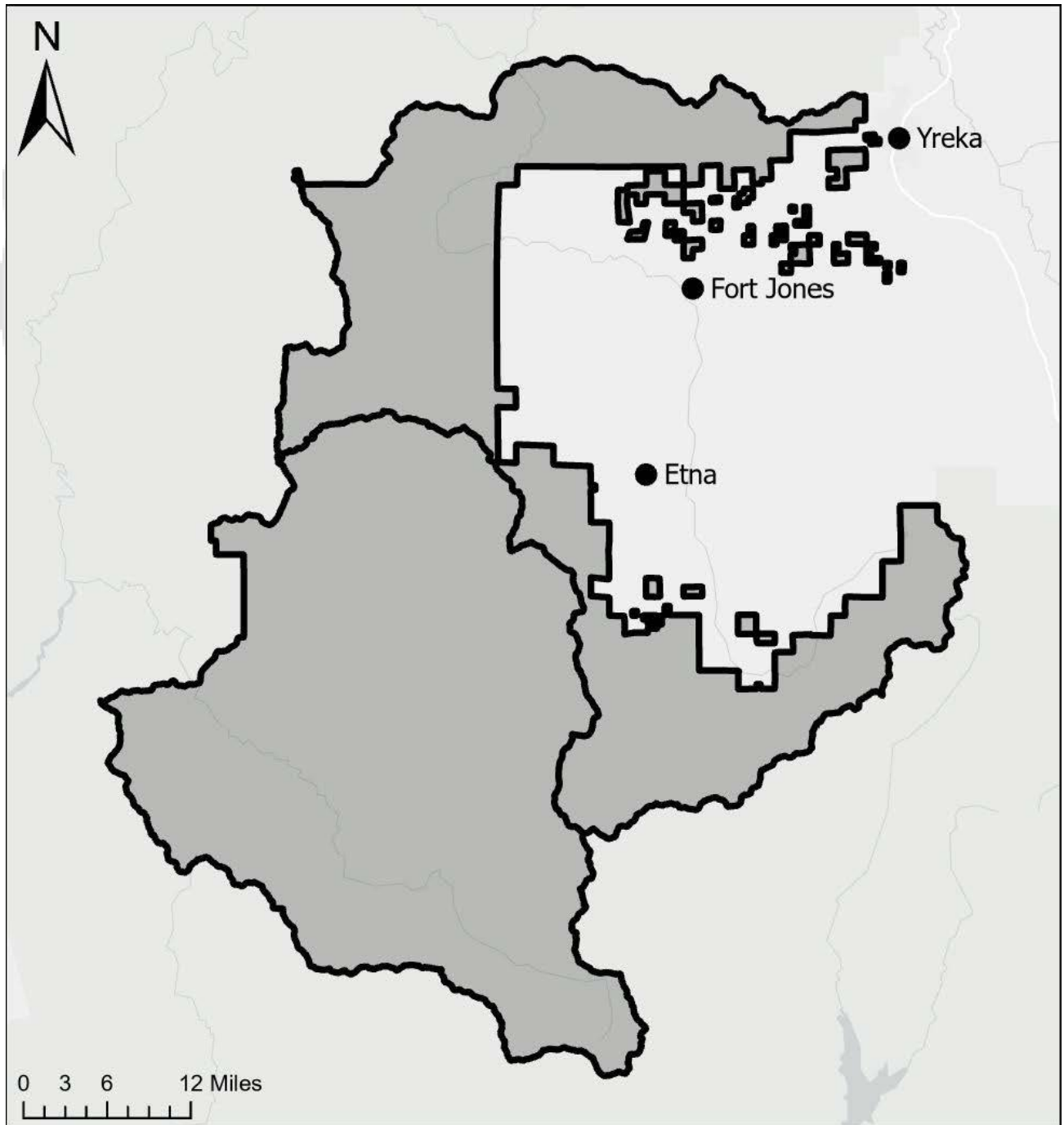
EQUIPMENT CLEANING/NOXIOUS WEED CONTROL

To prevent the spread of noxious weeds into the Project Area, CONTRACTOR shall be required to clean all off-road equipment prior to entry on to the Project Area and such cleaning shall occur off Federal Lands. This cleaning shall remove all soil, plant parts, seeds, vegetative matter, or other debris that could contain or hold seeds. **All equipment must undergo cleaning by the Contractor and pass inspection by CDA before being authorized to operate within the Project Area.** All subsequent move-ins of equipment to the Project Area shall be treated in the same manner as the initial move-in. "Off-road equipment" includes all logging and construction machinery, except for log trucks, chip vans, service vehicles, water trucks, pickup trucks, cars, and similar vehicles.

Noxious weeds are defined as any exotic plant species established or that may be introduced in the State, which may render the land unfit for agriculture, forestry, livestock, wildlife, or other beneficial uses and which is designated by applicable state agency or the local counties vendor is operating in, or by other appropriate agencies having jurisdiction.

All equipment and vehicles to be used at the job site shall be cleaned and certified free of noxious weeds and their seeds prior to entrance onto the National Forest. The restriction shall include equipment and vehicles intended for off-road use, as well as on-road use, whether they are owned, leased, or borrowed by the CONTRACTOR or their Sub-CONTRACTOR. Unless otherwise agreed, CONTRACTOR shall give the Forest Service at least 24 hours' notice when the equipment is ready for inspection. Notification will include an agreed-upon location where the equipment will be available for inspection by the forest service. Equipment, materials, and vehicles shall be visually inspected by CDA and certified in writing to be reasonably clean and weed-free (use Equipment Cleaning Inspection/Verification Form). Inspections will take place at a location designated by the Forest Officer in advance of equipment and material arrival. Equipment and vehicles are expected to proceed directly to the job site following the inspection. New infestations of noxious weeds of concern to the Forest Service and identified by either CONTRACTOR or Forest Service on the Project Area or on the haul route shall be promptly reported to the other party. CONTRACTOR and Forest Service shall agree on treatment methods to reduce or stop the spread of noxious weeds when new infestations are found.

Appendix B – Project Area Map



Location of burn units are distributed across the Salmon-Scott Ranger District and proper instruction will be provided by CDA to the contractor for each project area.